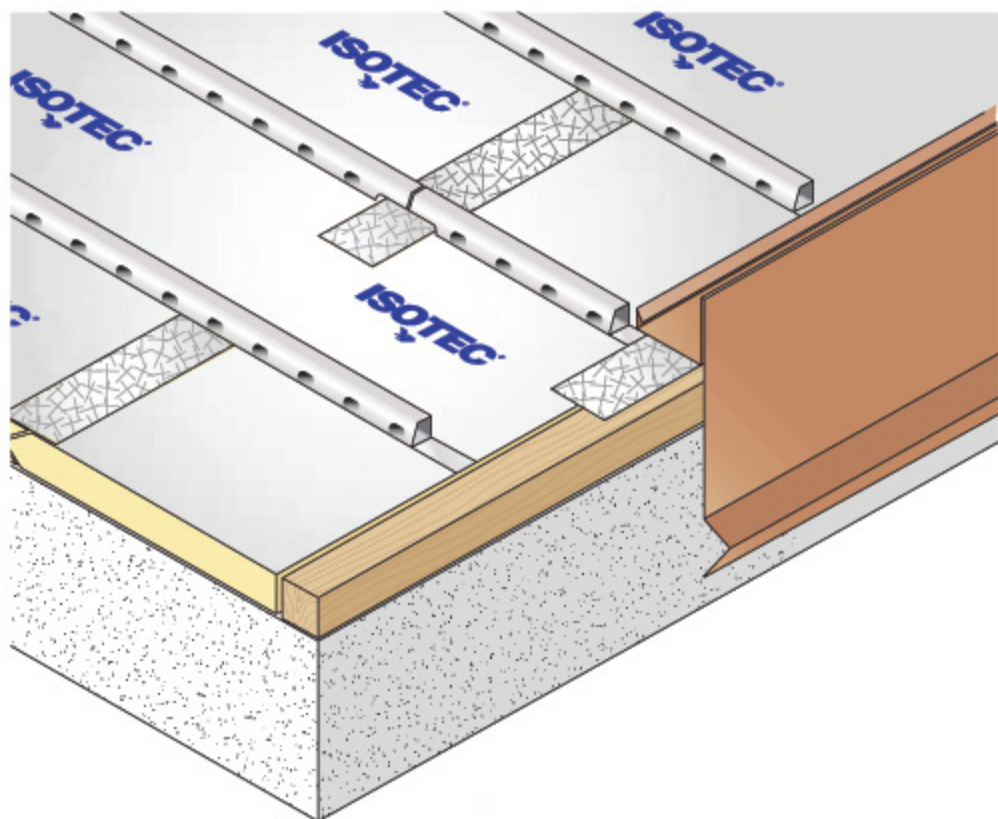
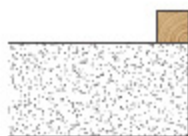


SHEET 5 Pitch side



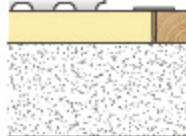
Where eaves extend laterally, place a length of wood along the pitch. Always seal the connection between ISOTEC panels and the wood beam with Aluminium butyl band.

1



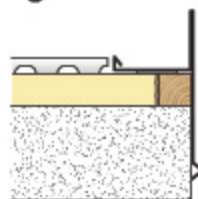
Base beam (section 6x6,
8-10-12 cm)

2



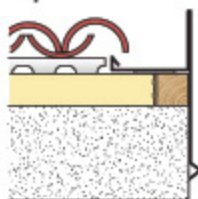
Protect the connection
between panels and wood
with aluminium butyl band

3



Attach the side flashing

4



Cover with roof tiles